

Overhead contact line for Tram and Light Rail ≤ 1.5 kV



Furrer+Frey

FL 200/260 (T)

Conductor rail

Overhead contact lines

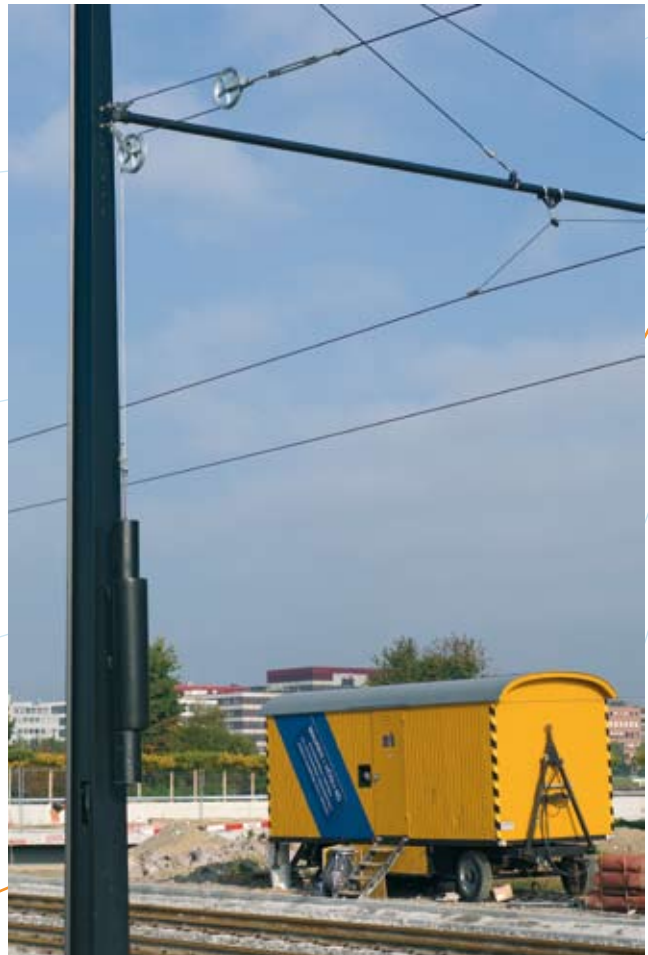
Railway safety control system for depots

Engines and tools

Overhead contact line for Tram and Light Rail ≤ 1.5 kV



Double track cantilever



Tensioning equipment



Cross span with delta cable suspension



Combined registration and support on curved track

Overhead contact line for Tram and Light Rail ≤ 1.5 kV



Twin cantilever over turnout



Sectioning with four feeders



Cable termination on mast



Fix delta suspension



Registration from cross arm



Delta suspension with pulley



Electrical connection

Furrer+Frey

FL 200/260 (T)

Conductor rail

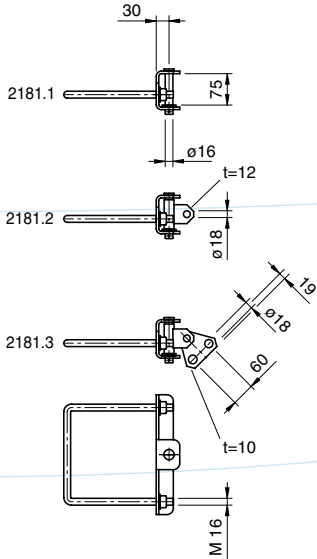
Overhead contact lines

Railway safety control system for depots

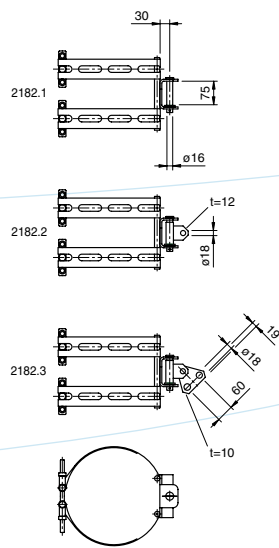
Engines and tools

Extract from material catalogue

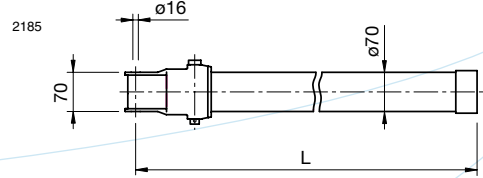
Bracket for cantilever tube, on mast HEB



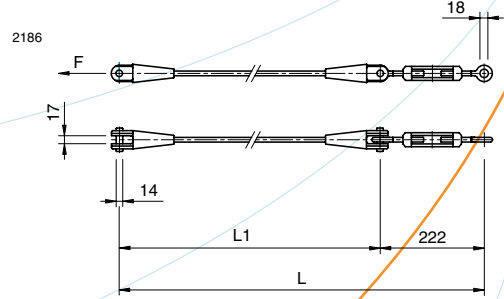
Bracket for cantilever tube, on tubular pole



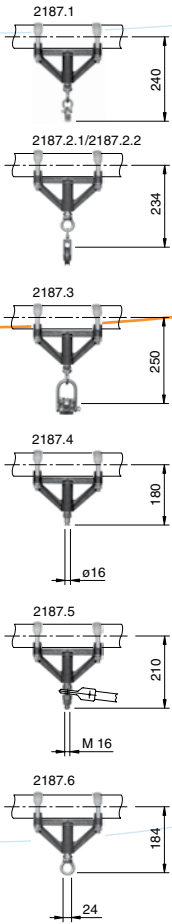
Cantilever tube with insulator to bracket



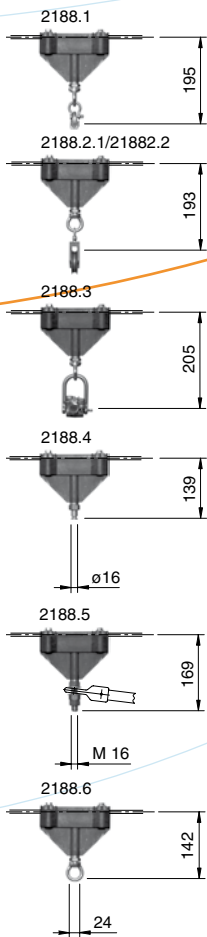
Insulating anchor cable with turnbuckle



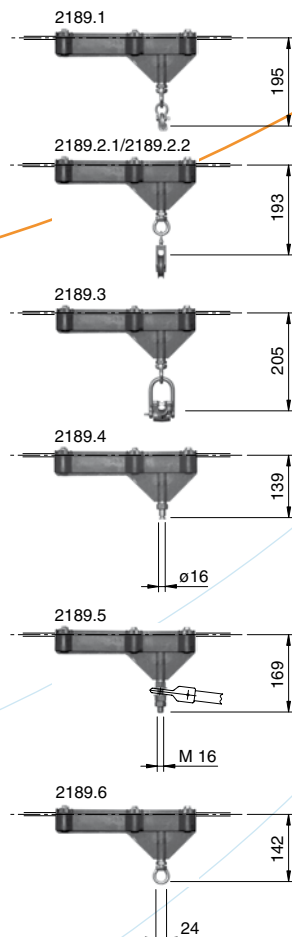
Insulated suspension for tube $\varnothing 55\text{mm}$ and $\varnothing 70\text{mm}$



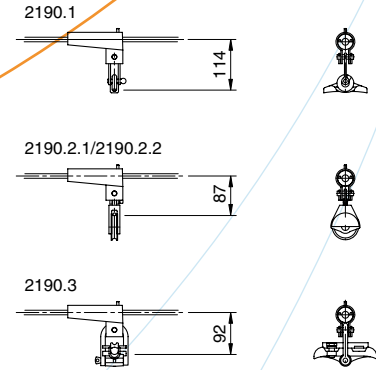
Insulated suspension for cross span, short



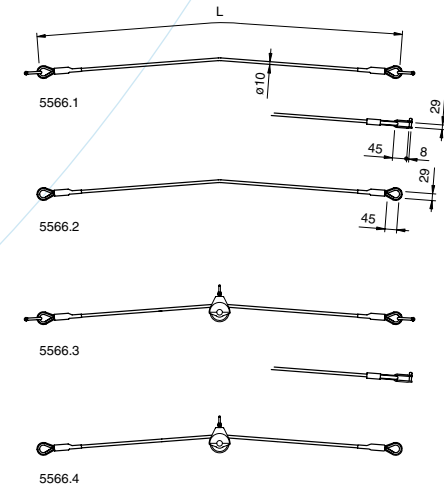
Insulated suspension for cross span, long



Insulated suspension for synthetic cross span



Delta cable (steel A2 or Kevlar)



Your partner for planning, supplying and installing overhead contact lines for tram and light rail

Furrer+Frey AG
Overhead contact line engineering
Design, manufacturing, installation
Thunstrasse 35, P.O. Box 182
CH-3000 Berne 6, Switzerland

Tel. +41 31 357 61 11
Fax +41 31 357 61 00
www.furrerfrey.ch

All rights are reserved with respect to this document and its content. Its contents may not be used without our prior written consent.
© 2006 Furrer+Frey AG

Furrer+Frey[®]
Overhead contact lines